

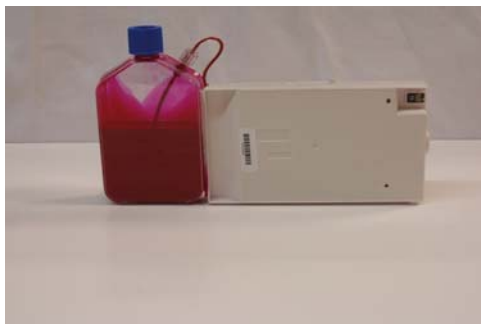
T-Jet Blazer Express & Pro

Bulk Cartridges



Description: Cyan Cartridge Slot 2

PART #
TJETBLAZER4800SLOT(#)
TJETBLAZER4880SLOT(#)



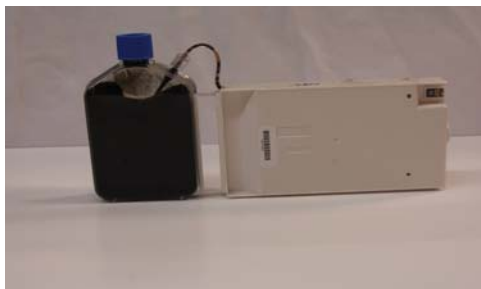
Description: Magenta Cartridge Slot 3

PART #
TJETBLAZER4800SLOT(#)
TJETBLAZER4880SLOT(#)



Description: Yellow Cartridge Slot 4

PART #
TJETBLAZER4800SLOT(#)
TJETBLAZER4880SLOT(#)



Description: Black Cartridge Slot 1

PART #
TJETBLAZER4800SLOT(#)
TJETBLAZER4880SLOT(#)

T-Jet Blazer Express & Pro

Bulk cartridges



Description: White Cartridge Slot (5)

PART #
TJETBLAZER4800SLOT(#)
TJETBLAZER4880SLOT(#)



Description: White Cartridge Slot (6)

PART #
TJETBLAZER4800SLOT(#)
TJETBLAZER4880SLOT(#)



Description: White Cartridge Slot (7)

PART #
TJETBLAZER4800SLOT(#)
TJETBLAZER4880SLOT(#)



Description: White Cartridge Slot (8)

PART #
TJETBLAZER4800SLOT(#)
TJETBLAZER4880SLOT(#)

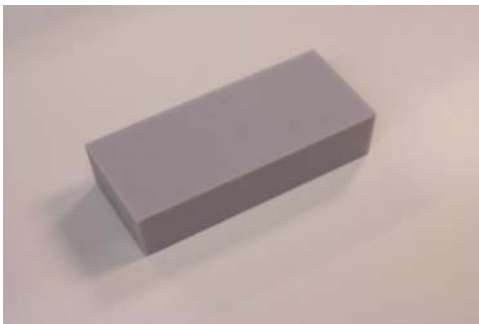
Photo Parts List
T-Jet Blazer Express & Pro

Bulk system



Description: Damper for BlazerPro/Blazer Express
There are 8 in either machine.

PART # TJETBLAZERDAMPER



Description: Waste Ink Pad reservoir

PART #
TJETBLAZERFOAMREPLACEPAD



Description: Hose Lines for BlazerPro and Blazer Exp

PART #



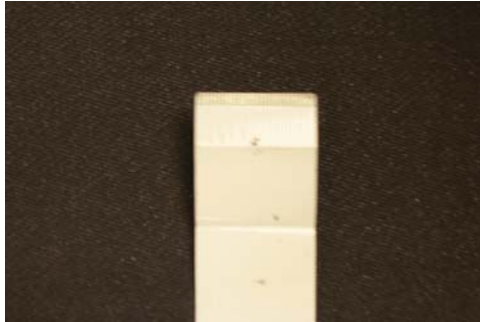
Description: Chip resetter for 4880 this part varies on version type.
THIS RESTTER MUST BE USED ONLY WITH EPSON 4880 MODEL

PART #
TJETBLAZER4880CHIPRESETTER

Photo Parts List

T-Jet Blazer Express & Pro

Bulk system



Description: Ribbon cable that connects to the printer head to the boards allowing them to communicate.

PART #
TJETBLAZERHARNESSA



Description: Ribbon cable that connects to the printer head to the boards allowing them to communicate.

PART #
TJETBLAZERHARNESSB



Description: This elbow connects to the damper and the ink hose.

PART #
TJETBLAZERDAMPERELBOW



Description: This is a cap for the ink cartridge bottle the top is fitted with a thin paper for cartridge to breath.

PART # TJETBLAZERBULKINKCAP

Photo Parts List

T-Jet Blazer Express & Pro

Bulk system



Description: This is the Y Axis board

PART #
TJETBLAZERYAXIESBOARD



Description: This is the Epson Interconnect board

PART #
TJETBLAZERICBOARD



Description: This is the Motor control board

PART #
TJETBLAZERCONT-D



Description: This is the Epson Sub C connection board

PART #

Photo Parts List
T-Jet Blazer Express & Pro

Bulk system



Description: DC Power Supply

PART #
TJETBLAZERDCPOWERSUPPLY



Description: This is a Blazer Mainboard

PART # TJETBLAZERMAINBOARD



Description: Epson Power Board

PART # EPSONPOWERSUPPLYBOARD



Description: 20 amp Breaker

PART #
TJETBLAZERCIRCUITBREAKER

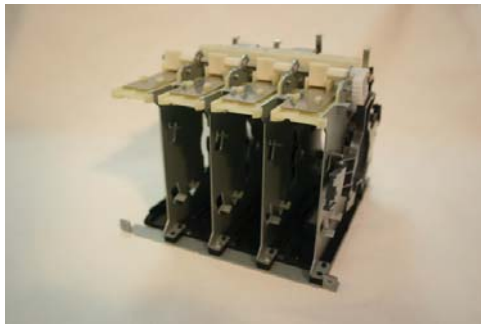
Photo Parts List
T-Jet Blazer Express & Pro

Bulk system



Description:

PART #



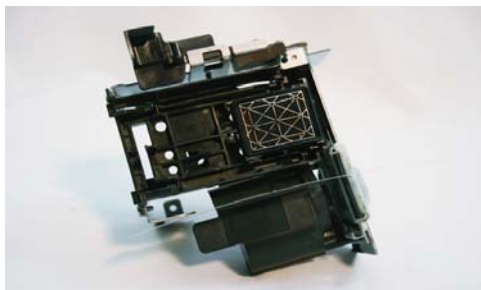
Description:

PART #



Description:

PART #



Description:

PART #

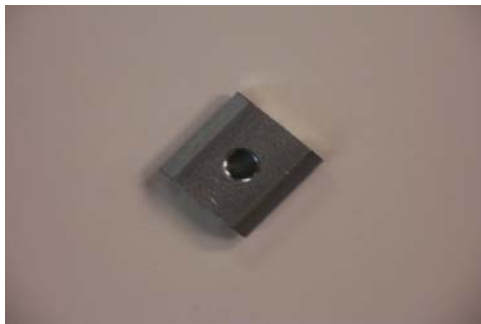
Photo Parts List
T-Jet Blazer Express & Pro

Bulk system



Description: Door Hinge

PART #
TJETBLAZERALUMFRAMEACCN5



Description:

PART #



Description: Gearbox Lead Screw Bearing

PART #
TJETBLAZERSUPPORTUNIT



Description: SS M5x10 BHCS

PART #
MSX10BHCS

Photo Parts List

T-Jet Blazer Express & Pro

Bulk system



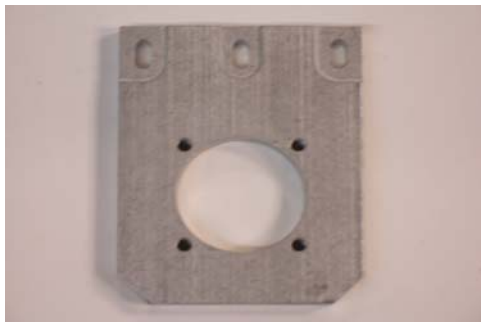
Description: 7/8 internal retaining ring

PART #
TJETBLAZERRETAININGRING



Description: Moog DC Motor Slide

PART #
TJETBLAZERG4800-0005



Description: Screw Eno Support Mount

PART # TJTEBLAZERG4800-0015



Description:

PART #

Photo Parts List
T-Jet Blazer Express & Pro

Bulk system



Description:

PART #



Description:

PART #



Description: Swivel Leveling Mount

PART #TJETBLAZERLEVELINGMT (PRO)



Description: Leveling Foot

PART # TJETBLAZERLEVELINGFOOT (EXP)

Photo Parts List

T-Jet Blazer Express & Pro

Bulk system



Description: Moog Motor this motor connects to the DC Motor Control board.

PART # MODIFIEDSERVOMOTOR



Description: Chip resetter for 4800 this part varies on version type.
THIS RESTTER MUST BE USED ONLY WITH EPSON 4800 MODEL

PART #
TJETBLAZER4800CHIPRESETTER



Description: Motor Encoder kit

PART # TJETBLAZERENCODER



Description: 15mm External Retaining Ring

PART #BE15RETAININGRING

T-Jet Blazer Express & Pro

Bulk system

Description:

PART #

Description:

PART #

Description:

PART #

Description:

PART #